

Port Authority® Cascade Waterproof Jacket. J322



For those days when the rain just won't stop. Our Cascade Waterproof Jacket is fully seam-sealed with waterproof zippers. This parka-length essential has modern good looks thanks to its trend-right colors, contrast zippers and colorblocking.

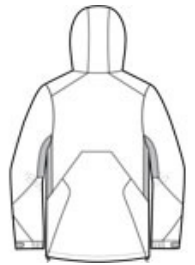
- 100% nylon shell
- 3000MM fabric waterproof rating
- Waterproof zippered chest pocket
- Waterproof front zippered pockets
- Hood with drawcord and toggles for adjustability
- Full-length exterior storm flap with snaps and hook and loop closure
- Two-way Vislon zipper
- Port Pocket™ for easy embroidery access
- Self-fabric adjustable tab cuffs with hook and loop closures
- Open hem with drawcord and toggles for adjustability

CARE INSTRUCTIONS

Machine wash cold with like colors. Gentle cycle. Tumble dry low. Cool iron if needed. Do not dry clean. Do not bleach.



front



back

HOW TO MEASURE



CHEST WIDTH

Measure under the arm and around the fullest part of the chest with arms down, keeping tape horizontal.

SIZE CHART

	XS	S	M	L	XL	2XL	3XL	4XL
Chest	32-34	35-37	38-40	41-43	44-46	47-49	50-53	54-57

COLOR INFORMATION



Black/ Magnet



Imperial Blue/
Black
PMS 7691 C